

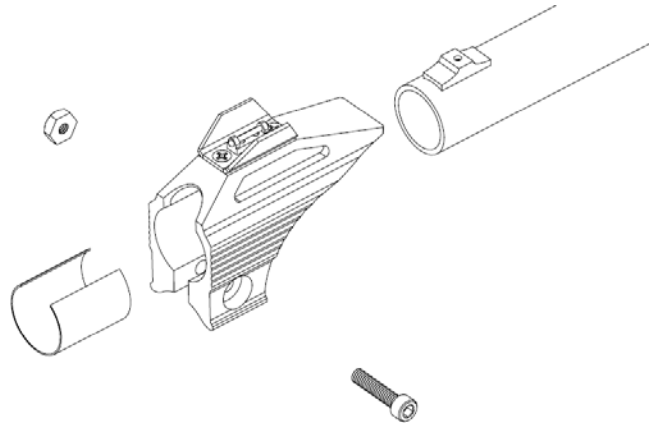
#

## *Ghost Ring EX Single Front Sight Instructions*

### **Assembly**

The Front Sight is designed to fit on many shotgun barrels **except on ribbed barrels or barrels with a front rifle sight**. The Front Sight comes with two shims to fit with smaller diameter barrels. Most often only one shim is needed, and on larger diameter barrels no shim is needed.

If the Front Sight is mounted and the bolt is fully tightened but the Front Sight is able to slide on the barrel, it is recommended to use another shim.



On barrels with a bead base, first remove the bead by unthreading it with pliers or other appropriate tool.

- 1) To mount the Front Sight, position the shim(s) if needed in the Front Sight so that it is flush.
- 2) Slide the Front Sight over the barrel until it is about 1/8" behind the end of the barrel.
- 3) On barrels with a bead base, the Front Sight may need to be rotated down slightly to clear the bead base first.
- 4) Align the Front Sight so that it is on the same plane as the Rear Sight. Clamp the Front Sight on the barrel using the bolt and screw. Make sure sight is securely fastened but **DO NOT OVER TIGHTEN**.

